

# KOBELCO®

## SK260LC ACERA MARK 9 TIER 4 INTERIM



**Operating Weight**  
59,524 lbs  
(27,000 kg)

**NET Horsepower**  
181 hp @ 2,100 rpm  
(135 kW @ 2,100 rpm)

**Max Digging Depth**  
23'0"  
(7.0 m)

**Bucket Capacity**  
.75 to 2.25 cu yd  
(.57 to 1.7 m<sup>3</sup>)

**Bucket Breakout Force (SAE)**  
41,117 lbs  
(183 kN)

## POWER AND PRODUCTIVITY - WITH EVEN BETTER FUEL EFFICIENCY

No one beats Kobelco when it comes to power and productivity. Kobelco has also built a reputation as one of the most fuel efficient excavators in the industry. Now the SK260 Mark 9, with its unique selective catalytic reduction (SCR) engine technology that is certified for the EPA's Tier 4 Interim emissions standards, delivers even better performance, with more power and faster engine response. It does this while delivering better fuel efficiency than the Tier 3 model it replaces, and emerges in a class by itself when compared to fuel efficiency of other brands of excavators for Tier 4 Interim.

### Powerfully Productive

The SK260LC still leads the pack in overall performance. Our proven Tier 4 Interim FPT engine powers our efficient/intelligent hydraulics to deliver:

- 10% more productivity with more power and faster cycle times
- High engine torque rise to get more work done
- Faster engine response, without exhaust gas recirculation to slow it down
- Hydraulics tuned for high swing torque and high arm digging forces
- Exceptionally fast cycle times for highest productivity

### SCR for Tier 4 Interim for Proven Reliability

- SCR only treats exhaust, so combustion is optimized for performance and reliability
- Simplified version of our proven 6.7L FPT engine used in earlier models
- No need for complicated and expensive variable-geometry turbocharger
- No regeneration to worry about or diesel particulate filter to replace
- SCR with DEF is the best choice for working in extreme temperatures, cold or hot

### Improved Fuel Efficiency

- Kobelco's Mark 9 excavators are the most fuel efficient we have ever built
- 10% better fuel efficiency with SCR for Tier 4 and optimized intelligent hydraulics when compared to the previous series
- Simplified engine with no EGR, tuned for pure performance and fuel efficiency
- New E Mode for added fuel economy while still providing excellent productivity
- Control monitor with fuel economy meter showing per-hour fuel consumption, and Eco Gauge that indicates when machine is being operated in the most efficient manner
- Auto-Decel reduces engine rpm after 4 seconds of operator inactivity, extending engine life and reducing fuel cost

### Auto Warm-up System

Kobelco's Acera Mark 9 Series feature a fully automatic engine and hydraulic warm up system. This warms-up the hydraulic circuit to an optimum 126 degrees F (52 C). This feature improves system efficiency to make you more productive more quickly, and it also helps reduce component wear.



Easy, ground-level servicing of filters, batteries and hydraulics reduces maintenance time to boost your productivity.

The SK260LC provides superior bucket and arm digging forces so you can easily handle the most demanding digging conditions.

# ACERA Mark 9



Large cab features ROPS/FOPS protection and generous operator comfort features, making it a safer and more productive place to work.





## SK260LC

### UNPARALLELED VISIBILITY AND CONTROL

You can't perform at your best if you're not comfortable and confident. Kobelco has gone to extremes to ensure that our customers are at their best when operating our excavators. The SK260 Mark 9 delivers complete operational control including our upgraded Intelligent Total Control System (ITCS) with progressive hydraulic acceleration that combines aggressive power and speed with fine control, so every movement is accurate and predictable. An all-new cab with standard ROPS and FOPS protection, full-feature color control monitor and a host of features add to the comfort and convenience. Furthermore, the SK260 Mark 9, maintains the excellent visibility from a low rear engine cover and the added confidence and productivity from a standard wide-angle rearview camera.

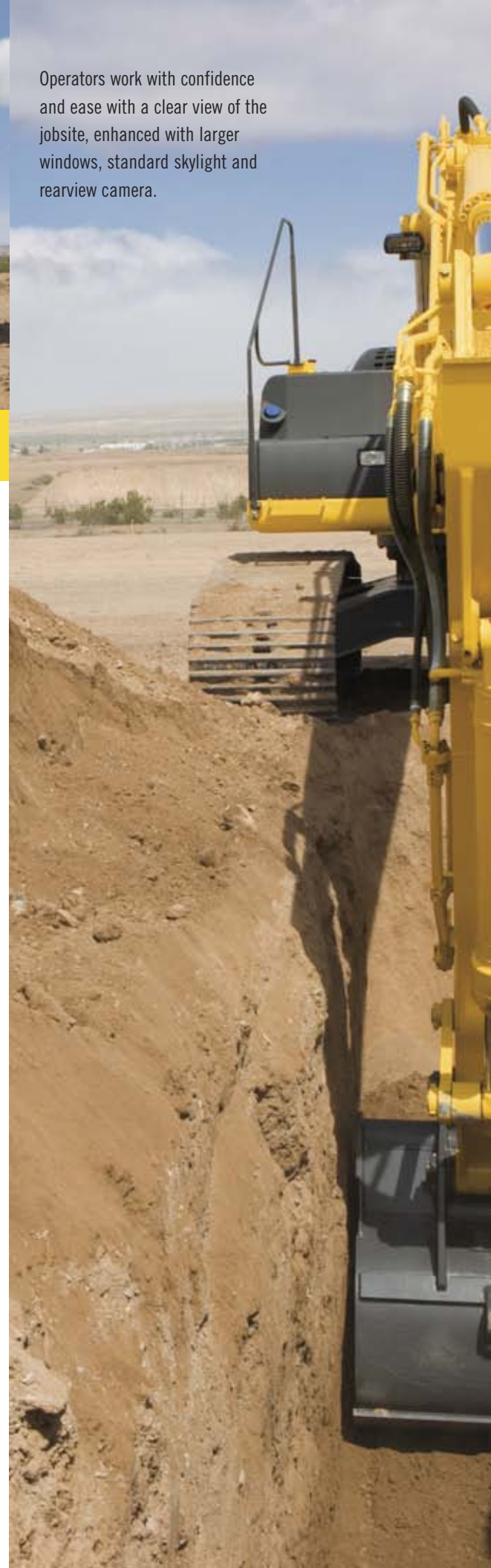
#### Even Better Visibility

- Standard wide-angle rearview camera with dedicated monitor view panel keeps operator informed and productive
- Low-profile sheet metal and engine cover provides excellent visibility to the rear
- Repositioned controls and more glass provide better visibility from sides of the new cab
- New standard skylight with sunshade for a better view to overhead obstacles
- Moveable front and door windows provide visibility as well as cross-flow ventilation
- Operator is positioned for maximum visibility of all functions and operations

#### New Mark 9 Cab

- New standard cab features rollover (ROPS) and falling object (FOPS) protection
- Larger/oversized cab accommodates all sizes of operators, along with plenty of storage space
- New, color, multi-display control monitor includes easy-to-read gauges, alerts and a full-color view screen dedicated to the rear wide-angle camera
- Optional air-suspension seat with heated cushions helps get operators working early and keeps them comfortable all day
- Insulated and isolation-mounted cab for low noise and vibration levels
- Standard climate control system with upgraded ventilation gives operators more adjustment options for air flow

Operators work with confidence and ease with a clear view of the jobsite, enhanced with larger windows, standard skylight and rearview camera.





ROPS/FOPS cab structure includes standard skylight with sunshade for added safety

- Wide entry/exit area provides easy access to the roomy cab
- Analog digital hour meter is positioned so that it can easily be viewed from ground level, even when machine is turned off
- 24 volt to 12 volt converter allows for charging cell phones and powering other accessories
- Improved ergonomics and convenience features include 2 drink holders and cell phone pocket
- AM/FM stereo with dual speakers is standard

#### **Instrumentation That Is Easy to Read and Adjust**

- Operators can establish and review service interval reminders for engine oil, hydraulic oil, fuel and filters
- Auxiliary hydraulics can be adjusted from the control monitor to match pressure and flow for the work tool
- Control monitor is repositioned along front pillar of cab to be within easy sight of operator at all times
- Self-diagnostics with fault code memory make it easy to check and adjust system pressures, engine speed, travel speed, hydraulic pressure and other operating functions
- Work and attachment modes are easy to select and are clearly displayed on the new color control monitor
- Dedicated panels on the control monitor include entry keypad and color view monitor from rearview camera
- New control monitor includes additional features such as fuel economy gauge, Eco gauge and DEF gauge
- Warning screens and audible alarms alert you to temperature and pressure status

#### **Heavy-Duty by Design**

- Long, beefy X-frame offers enhanced stability and balance
- Flanged self-lubricating linkage bushings deliver long life with low maintenance
- Pumps, valves and piping are optimized for maximum efficiency
- Robust lift cylinders ensure maximum rated capacity
- Rollers, sprockets and travel motors are sealed for long life
- Heavy-duty boom and arm are now standard

The hydraulic feed to the main pumps is positioned to draw fluid from the side of the hydraulic tank - rather than the tank bottom like many competitors. The hydraulic system utilizes a high-capacity, small particle filtration system to provide industry-leading maintenance intervals.



High-strength brass bushings embedded with solid lubricant provide long life and extend intervals for greasing of pins up to 1000 hours.



Dependable 411 cu. in. (6.73 L) 6-cylinder turbocharged **FPT™** engine puts out a maximum 625 ft-lbs (848 N-m) of torque.



The work mode system provides three work modes and two attachment modes to match your work operations. The control monitor features a large screen for the rearview camera and new fuel economy measurement graphing.



## INTELLIGENT HYDRAULICS FOR PERFORMANCE AND EFFICIENCY

The SK260 Mark 9 maximizes the unique capabilities of its Tier 4 Interim certified FPT engine and optimized hydraulics with our upgraded Intelligent Total Control System (ITCS).

### FIVE MODE SELECTIONS:

#### Work Modes:

- **H Mode** Heavy-duty excavation and loading work, gives priority to the workload at high speed
- **S Mode** Standard digging and loading work, for versatility to most any job
- **E Mode** Economy leverages more of intelligent hydraulics features to deliver exceptional fuel efficiency with productivity for normal digging conditions

#### Attachment Modes:

- **B Mode** Breaker/hammer optimized (1-way hydraulic flow)
- **A Mode** Auxiliary attachment work, such as demolition with crusher/nibbler-breaker or shear (2-way/2 pump flow)

### Intelligent Total Control System (ITCS)

- ITCS recognizes your moves and assists by providing power where and when it is needed
- Cushioned transitions between functions reduce jerkiness from high-speed movements
- Progressive hydraulic acceleration adds smoothness for even faster cycle times
- ITCS also provides hydraulic sensitivity for fine grading and leveling
- Auto-Accel smoothly increases engine rpm and hydraulic flow in direct proportion to the operator's movement of the control levers. This results in even, deliberate acceleration for precise applications.
- Proportional controls built into the joysticks are available with auxiliary hydraulics
- Plug-in electronics are available for easy retrofit of telematics or GPS bucket positioning

### Smooth, Powerful Hydraulics

Kobelco performance features are unmatched by the competition.

- Power Boost™ provides 10% more bucket breakout force - on command, **without time limit**
- Heavy Lift provides 10% more lifting and swing capability – on command, **without time limit**
- Independent Travel circuit is exclusive to North American Kobelco products, providing dedicated flow for excavator travel
- Swing priority dedicates power for swinging heavy loads quickly
- Boom and arm holding valves minimize drift for accurate positioning



Side-by-side radiator, oil cooler and intercooler can be accessed easily for inspection and cleaning. The side-by-side design allows the components to be removed independently. This means the radiator can be removed for service without draining the hydraulic system.

## KOBELCO SOLUTIONS FOR DEMANDING APPLICATIONS

Are your jobs sometimes different or demanding? Is what you consider an opportunity what others call a problem? Then rely on Kobelco as your best choice for reliable, cost-effective solutions.

- **Long Reach Version** - perfect size machine for dredging and bigger ditch cleaning jobs, with 60 feet of reach
- **High and Wide Undercarriage** - wider (12'0"), higher, reinforced car body and undercarriage for greater stability, ground clearance and visibility. Great for heavy construction and lifting heavy pipe and trench boxes, and for truck loading
- **Severe Duty Undercarriage** - reinforced undercarriage with heavy-duty components, recommended for working in forestry, rock or with single grouser track shoes
- **Special Application Package** - modifications including high and wide undercarriage, reinforced frame, guarding, auxiliary hydraulics with extra rotation pump, and provisions for cab riser, for above ground applications such as forestry and scrap handling
- **Demolition Guarding Package** - a complete guarding arrangement for cab, car body and upper for use in demolition, shear and scrap applications
- **Slewing Ring Riser** - raises upper to allow clearance to work wading into water or for added visibility for above-ground applications
- **Auto-Lube System** - available for standard front or long reach versions, allows for automatic and more frequent lubrication, recommended for dusty conditions or working below water line



The high and wide undercarriage option provides a larger, heavy-duty car body and undercarriage, along with slewing ring riser, for better stability, visibility and durability to allow the SK260 Mark 9 to handle tough jobs typically reserved for larger machines.

Kobelco offers an option for a factory-installed autolube system, to more easily keep the machine properly greased, minimize downtime and increase reliability in difficult or dusty applications.

# ACERA Mark 9

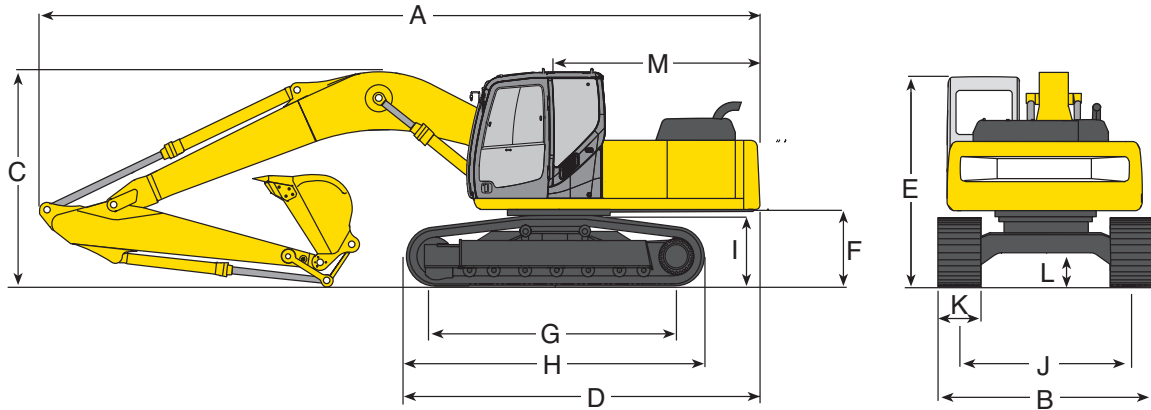


## Designed with attachments in mind

Kobelco doesn't just design excavators; we design excavators for use with attachments.

- High-capacity hydraulic system is adjustable from inside the cab
- Standard one- or two-way auxiliary valve makes it easy to install piping and controls for auxiliary hydraulics
- Two auxiliary hydraulic modes permit switching between one-way and two-way flow without leaving the cab to manually switch a valve (with auxiliary hydraulics installed)
- An optional independent flow 'extra' circuit, with dedicated rotary gear pump, provides flow for multi-function attachments that include thumbs or twist buckets
- A full selection of buckets, couplers and thumbs are offered to maximize the versatility of the machine.

# SK260LC DIMENSIONS, WEIGHTS & BUCKET SELECTION CHART



## DIMENSIONS: SK260LC Unit ft-in (m)

ARM LENGTH	9' 9" (2.98)	12' 0" (3.66)
A. Overall length	33' 2" (10.12)	33' 3" (10.13)
B. Overall width	11' 1" (3.39)	11' 1" (3.39)
C. Overall height (to top of boom)	10' 6" (3.20)	10' 8" (3.36)
D. Basic machine length	17' 4" (5.28)	17' 4" (5.28)
E. Overall height (to top of cab)*	10' 2" (3.10)	10' 2" (3.10)
F. Ground clearance of rear end*	3' 8" (1.11)	3' 8" (1.11)
G. Track on ground	12' 8" (3.85)	12' 8" (3.85)
H. Overall length of undercarriage	15' 3" (4.65)	15' 3" (4.65)
I. Undercarriage height at center*	3' 2" (960 mm)	3' 2" (960 mm)
J. Track gauge	8' 6" (2.59)	8' 6" (2.59)
K. Width of crawler shoe	31.5" (800 mm)	31.5" (800 mm)
L. Ground clearance of undercarriage*	1' 7" (485 mm)	1' 7" (485 mm)
M. Tail swing radius	9' 8" (2.94)	9' 8" (2.94)

\*Excludes height of grouser bar.

**WEIGHTS: SK260LC** with 9'9" (2.98 m) std. HD arm, and 1.31 yd<sup>3</sup> (1.0 m<sup>3</sup>) bucket weighing 1,720 lbs (780 kg)

SHOE WIDTH	in (mm)	27.6" (700)	31.5" (800)
Machine overall width	ft-in (mm)	10' 9" (3290)	11' 1" (3390)
Ground pressure	psi (kg/cm <sup>2</sup> )	6.50 (0.45)	6.52 (0.45)
Operating weight	lb (kg)	58,863 (26,700)	59,524 (27,000)

## HYDRAULIC SYSTEM

Pumps	2 variable displacement axial piston	
Max discharge flow	US gal/min (l/min)	2x64.9 (2x246)
Operating Pressure:		
Implement	psi (MPa)	4,980 (34.3)
Power Boost/Heavy lift	psi (MPa)	5,480 (37.8)
Travel	psi (MPa)	4,980 (34.3)
Swing	psi (MPa)	4,130 (28.5)
Pilot control circuit	psi (MPa)	730 (5.0)
Control valves	8 spool, open center	

## BUCKET SELECTION CHART

Bucket Duty	Capacity (SAE)		Width		Bucket Weight		Arm ft-in (m)	
	Cubic Yard	(m <sup>3</sup> )	Inches	(m)	lb	(kg)	9'9" (2.98)	12'0" (3.66)
GENERAL	.875	(.669)	24"	(.609)	1,560	(708)	H	H
	1.125	(.860)	30"	(.762)	1,710	(776)	H	H
	1.375	(1.051)	36"	(.914)	1,860	(844)	H	M
	1.625	(1.243)	42"	(1.066)	2,060	(934)	M	L
	1.71	(1.31)	48"	(1.219)	2,539	(1,176)	M	X
	2.0	(1.53)	54"	(1.371)	3,065	(1,390)	L	X
	2.25	(1.72)	54"	(1.371)	3,331	(1,511)	L	X
HEAVY DUTY	.875	(.669)	30"	(.762)	1,840	(834)	H	H
	1.125	(.860)	36"	(.914)	2,000	(907)	H	M
	1.375	(1.051)	42"	(1.066)	2,215	(1,004)	M	L
	1.625	(1.242)	48"	(1.219)	2,335	(1,059)	L	X
SEVERE DUTY	.75	(.573)	27"	(.685)	2,205	(1,000)	H	M
	1.00	(.764)	30"	(.762)	2,450	(1,111)	M	X
	1.125	(.860)	36"	(.914)	2,545	(1,154)	X	X

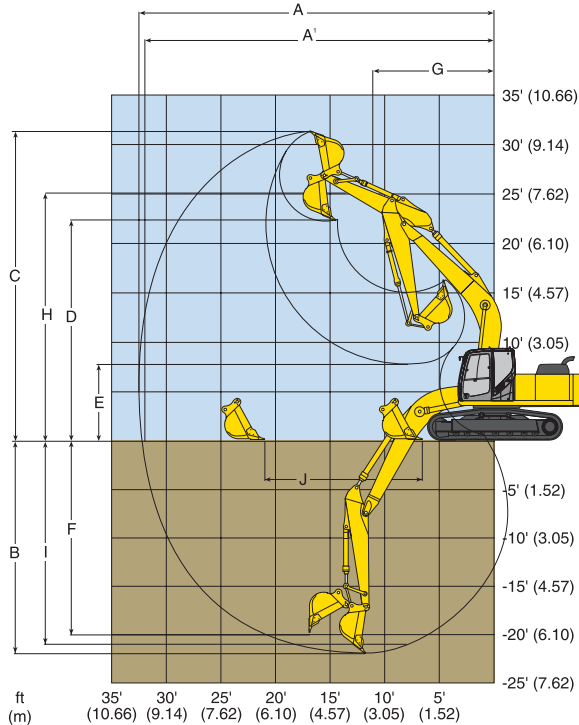
H - Used with material weight up to 3,000 lbs/cu yd (1,780 kg/m<sup>3</sup>)

M - Used with material weight up to 2,500 lbs/cu yd (1,483 kg/m<sup>3</sup>)

L - Used with material weight up to 2,000 lbs/cu yd (1,186 kg/m<sup>3</sup>)

X - Not recommended

# SK260LC SPECIFICATIONS



This chart is a graphic representation of the working ranges for the SK260LC equipped with a 9' 9" (2.98 m) arm.

## PERFORMANCE

Travel speed (high/low)	3.6/2.2 mph (5.8/3.6 km/h)
Swing speed	11 rpm
Gradeability	35 degrees (70%)
Drawbar pulling force	54,900 lbs (244 kN)

## SPECIFICATION SUMMARY

### GENERAL

Operating weight with bucket	lb (kg)	59,524 (27,000)
Bucket capacity range	cu yd (m <sup>3</sup> )	.75-2.25 (.57 - 1.7)

### ENGINE

Make and model	IVECO by FPT	F4HFE613R*A003
Displacement	cu in (L)	411 (6.73)
Bore and stroke	in (mm)	4.1"x5.2" (104x132)
Horsepower SAE NET	HP (kW) @ RPM	181@2,100 (135@2,100)
Horsepower ISO 14396	HP (kW) @ RPM	190@2,100 (142@2,100)
Max torque ISO 14396	lb-ft (kN.m)	848@1,400 (625@1,400)

### SWING

Swing speed	rpm	11
Tail swing radius	ft-in (m)	9' 9" (2.98)
Swing torque	lb-ft (kN • m)	58,267 (79)

### HYDRAULIC SYSTEM

Hydraulic pump	No & type	2 VP + 1 FG
Rated oil flow	gpm (l/min)	2x64.9+5.3 (2x246)+20
Operating pressure Implement	psi (kg/cm <sup>2</sup> )	4,980 (350)
Heavy lift	psi (kg/cm <sup>2</sup> )	5,480 (385)
Travel	psi (kg/cm <sup>2</sup> )	4,980 (350)
Swing	psi (kg/cm <sup>2</sup> )	4,130 (290)

## WORKING RANGES Unit ft-in (m)

### ATTACHMENTS

	Standard Arm 9' 9" (2.98)	Optional Arm 12' 0" (3.66)
A. Max digging reach	33' 10" (10.31)	36' 0" (10.97)
A'. Max digging reach at ground level	33' 3" (10.14)	35' 6" (10.82)
B. Max digging depth	23' 0" (7.00)	24' 1" (7.60)
C. Max reach height	32' 2" (9.80)	33' 8" (10.26)
D. Max dump clearance	22' 7" (6.88)	23' 1" (7.31)
E. Min dump clearance	8' 4" (2.55)	6' 3" (1.91)
F. Max vertical wall digging depth	16' 11" (5.15)	19' 8" (6.00)
G. Min front swing radius	12' 10" (3.91)	12' 10" (3.91)
H. Height at min front swing radius	26' 2" (7.97)	25' 10" (7.88)
I. Digging depth for 8' (2.4 m) flat bottom	22' 4" (6.82)	24' 7" (7.53)
J. Min finish radius at ground level	17' 3" (5.27)	21' 3" (6.48)

## DIGGING FORCE Unit lbf (kN)

		9' 9" (2.98 m) Arm	12' 0" (3.66 m) Arm
Bucket digging force	ISO	42,039* (187)*	42,039* (187)*
Bucket digging force	SAE	41,117* (183)*	37,543* (167)*
Arm crowding force	ISO	29,450* (131)*	23,380 (104)
Arm crowding force	SAE	28,506* (127)*	22,706 (101)

\*Power Boost engaged

### UNDERCARRIAGE

Track overall length	ft-in (m)	15' 3" (4.65)
Track overall width w/std.shoe	ft-in (m)	11' 1" (3.39)
Standard track shoe	in (mm)	31.5" (800)
Travel speed	mph (km/h)	3.6/2.2 (5.8/3.6)
Draw bar pull	lb (kN)	54,900 (244)
Ground pressure	psi (kPa)	6.52 (0.45)
Ground clearance	in (mm)	1' 7" (485)

### SHIPPING DIMENSIONS

Height	ft-in (m)	10' 6" (3.20)
Width w/std.shoe	ft-in (m)	11' 1" (3.39)
Length	ft-in (m)	33' 2" (10.12)

## REFILLING CAPACITIES Unit: US gal (liters)

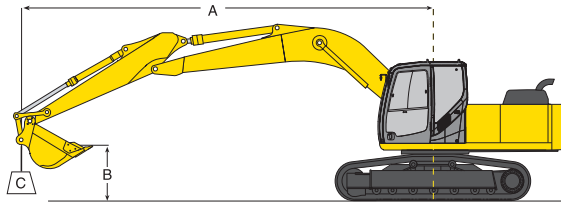
Fuel tank capacity	gal (l)	122 (460)
DEF tank capacity	gal (l)	31 (118)
Hydraulic oil reservoir	gal (l)	45 (170)
Hydraulic system including oil reservoir	gal (l)	74 (280)
Cooling system	gal (l)	6.6 (25)
Engine oil	gal (l)	4.8 (18.3)
Travel drive (each)	gal (l)	2x1.3 (2x5.0)





# SK260LC LIFT CAPACITIES — 12' Arm

## LIFTING CAPACITY DIAGRAM



- A Reach swing centerline to bucket hook
- B Bucket hook height above/below ground
- C Lifting capacities in pounds and kilograms
  - Max discharge pressure: 5,480 psi (385 kg/cm<sup>2</sup>)
  - Track shoe: 31.5" (800 mm) Triple grouser
  - Boom: 19' 9" (6.02 m)
  - Bucket weight: 1,786 lb (810 kg)



Rating over front



Rating over side/360 degrees

## LIFTING CAPACITY — 31.5" (800 mm) triple grouser shoe

Based on machine equipped with — Arm: 12' (3.66 m) Bucket: SAE heaped 1.1 cu. yd. (0.81 m<sup>3</sup>) bucket

A		LIFT POINT RADIUS										AT MAX. REACH				
		5' (1.5 m)		10' (3.0 m)		15' (4.6 m)		20' (6.1 m)		25' (7.6 m)		30' (9.1 m)		RADIUS		
		Rating over front	Rating over side/360 degrees	Rating over front	Rating over side/360 degrees	Rating over front	Rating over side/360 degrees	Rating over front	Rating over side/360 degrees	Rating over front	Rating over side/360 degrees	Rating over front	Rating over side/360 degrees			
B	C															
25' (7.6 m)	lb									*6,700	*6,700			*5,610	*5,610	25' 7"
	kg									*3,040	*3,040			*2,540	*2,540	(7.81 m)
20' (6.1 m)	lb									*9,060	*9,060			*5,350	*5,350	28' 8"
	kg									*4,110	*4,110			*2,420	*2,420	(8.74 m)
15' (4.6 m)	lb									*9,900	*9,900	*6,790	*6,790	*5,340	*5,340	30' 7"
	kg									*4,490	*4,490	*3,080	*3,080	*2,420	*2,420	(9.33 m)
10' (3.0 m)	lb					*15,730	*15,730	*12,770	*12,770	*11,290	9,700	*9,260	6,950	*5,550	*5,550	31' 8"
	kg					*7,130	*7,130	*5,790	*5,790	*5,120	4,390	*4,200	3,150	*2,510	*2,510	(9.65 m)
5' (1.5 m)	lb			*24,120	*24,120	*21,260	*20,510	*15,640	13,110	*12,900	9,150	10,550	6,670	6,000	5,950	31' 10"
	kg			*10,940	*10,940	*9,640	*9,300	*7,090	5,940	*5,850	4,150	4,780	3,020	*2,720	2,690	(9.72 m)
Ground Level	lb	*7,900	*7,900	*19,990	*19,990	*25,380	19,020	*18,100	12,280	13,790	8,680	10,290	6,340	*6,750	5,970	31' 3"
	kg	*3,580	*3,580	*9,060	*9,060	*11,510	8,620	*8,210	5,570	6,250	3,940	4,660	2,910	*3,060	2,700	(9.54 m)
-5' (-1.5 m)	lb	*14,920	*14,920	*24,970	*24,970	*27,480	18,310	19,150	11,780	13,460	8,380			*8,000	6,340	29' 10"
	kg	*6,770	*6,770	*11,320	*11,320	*12,460	8,300	8,680	5,340	6,100	3,800			*3,620	2,870	(9.11 m)
-10' (-3.0 m)	lb	*22,320	*22,320	*33,430	*33,430	*27,680	18,170	18,980	11,630	13,380	8,310			*10,270	7,230	27' 6"
	kg	*10,120	*10,120	*15,160	*15,160	*12,550	8,240	8,600	5,270	6,070	3,770			*4,650	3,270	(8.38 m)
-15' (-4.6 m)	lb	*31,180	*31,180	*38,280	37,840	*25,870	18,480	*18,860	11,820					14,670	9,180	23' 9"
	kg	*14,140	*14,140	*17,360	17,160	*11,730	8,380	*8,550	5,360					6,650	4,160	(7.26 m)
-20' (-6.1 m)	lb			*30,400	*30,400	*20,800	19,350							*16,440	14,540	18' 1"
	kg			*13,780	*13,780	*9,430	8,770							*7,450	6,590	(5.51 m)

## LIFTING CAPACITY — 23.6" (600 mm) triple grouser shoe

Based on machine equipped with — Arm: 12' (3.66 m) Bucket: SAE heaped 1.1 cu. yd. (0.81 m<sup>3</sup>) bucket

A		LIFT POINT RADIUS										AT MAX. REACH				
		5' (1.5 m)		10' (3.0 m)		15' (4.6 m)		20' (6.1 m)		25' (7.6 m)		30' (9.1 m)		RADIUS		
		Rating over front	Rating over side/360 degrees	Rating over front	Rating over side/360 degrees	Rating over front	Rating over side/360 degrees	Rating over front	Rating over side/360 degrees	Rating over front	Rating over side/360 degrees	Rating over front	Rating over side/360 degrees			
B	C															
25' (7.6 m)	lb									*6,700	*6,700			*5,610	*5,610	25' 7"
	kg									*3,040	*3,040			*2,540	*2,540	(7.81 m)
20' (6.1 m)	lb									*9,060	*9,060			*5,350	*5,350	28' 8"
	kg									*4,110	*4,110			*2,420	*2,420	(8.74 m)
15' (4.6 m)	lb									*9,900	*9,900	*6,790	*6,790	*5,340	*5,340	30' 7"
	kg									*4,490	*4,490	*3,080	*3,080	*2,420	*2,420	(9.33 m)
10' (3.0 m)	lb					*15,730	*15,730	*12,770	*12,770	*11,290	9,490	*9,260	6,780	*5,550	*5,550	31' 8"
	kg					*7,130	*7,130	*5,790	*5,790	*5,120	4,300	*4,200	3,070	*2,510	*2,510	(9.65 m)
5' (1.5 m)	lb			*24,120	*24,120	*21,260	*20,110	*15,640	12,840	*12,900	8,940	10,300	6,510	6,000	5,800	31' 10"
	kg			*10,940	*10,940	*9,640	*9,120	*7,090	5,820	*5,850	4,050	4,670	2,950	*2,720	2,630	(9.72 m)
Ground Level	lb	*7,900	*7,900	*19,990	*19,990	*25,380	18,620	*18,100	12,010	13,470	8,480	10,040	6,270	*6,750	5,810	31' 3"
	kg	*3,580	*3,580	*9,060	*9,060	*11,510	8,440	*8,210	5,440	6,110	3,840	4,550	2,840	*3,060	2,630	(9.54 m)
-5' (-1.5 m)	lb	*14,920	*14,920	*24,970	*24,970	*27,480	17,910	18,720	11,510	13,140	8,180			*8,000	6,180	29' 10"
	kg	*6,770	*6,770	*11,320	*11,320	*12,460	8,120	8,490	5,220	5,960	3,710			*3,620	2,800	(9.11 m)
-10' (-3.0 m)	lb	*22,320	*22,320	*33,430	*33,430	*27,680	17,770	18,540	11,350	13,070	8,110			*10,270	7,050	27' 6"
	kg	*10,120	*10,120	*15,160	*15,160	*12,550	8,050	8,410	5,150	5,920	3,670			*4,650	3,190	(8.38 m)
-15' (-4.6 m)	lb	*31,180	*31,180	*38,280	37,070	*25,870	18,080	18,760	11,550					14,330	8,960	23' 9"
	kg	*14,140	*14,140	*17,360	16,810	*11,730	8,200	8,510	5,230					6,490	4,060	(7.26 m)
-20' (-6.1 m)	lb			*30,400	*30,400	*20,800	18,950							*16,440	14,230	18' 1"
	kg			*13,780	*13,780	*9,430	8,590							*7,450	6,450	(5.51 m)

# ACERA Mark 9



# SK260LC Standard and Optional Equipment

## STANDARD EQUIPMENT

- AM/FM stereo with speakers
- Arm: 9' 9" (2.98 m) with vertical ribbed rock guard, tapped blocks, ready for auxiliary attachments
- Audible warning system for high coolant temperature, low engine oil pressure, clogged air filter and oil replacement interval
- Auto warm-up function of engine and hydraulic system
- Auxiliary valve with flow control, adjustable from control monitor
- Boom (heavy-duty), 19' 9" (6.02 m) with hydraulic hoist cylinders
- Boom and arm holding (anti-drift) valves
- Cab with structures compliant per ISO 12177-2 (ROPS) and ISO 10262 (FOPS) is sound insulated, with viscous silicon-filled mounts, windshield wiper, cigarette lighter, ashtray, floor mat, cab light, control lever lock, tinted skylight with sunshade
- Climate control air conditioning/heating/defrost system
- Counter weight 13,228 lbs. (6,000 kg)
- Control monitor with color screen displays for rearview camera, mode selection, gauges for coolant temperature, fuel tank, diesel exhaust tank, and fuel economy. Menu functions for fuel economy graphing, maintenance schedules, system status, engine preheat, low engine oil pressure, engine coolant temperature, air cleaner restriction, battery charging, fuel level, CPU error and tachometer. autodecel, mode selector, one/two pump auxiliary hydraulics and swing flashers
- Dual element air cleaner with service indicator
- Electric horn
- Engine by FPT™ model F4HFE613R\*A003, Tier 4 interim certified (SCR)
- Engine shuts down automatically for low oil pressure
- Grease lubricated track with strutted links
- Heavy-duty batteries (2 x 12 volt 160 Ah)
- Heavy Lift and Power Boost *"without time limit"*
- Hydraulic track adjusters with cushion springs
- Independent travel
- Lifetime-lubricated track rollers, idlers and sprockets
- Mode selection:
  - Work Modes:
    - H Mode — Heavy-duty excavation work
    - S Mode — Standard digging and loading work
    - E Mode — Fuel Economy
  - Attachment Modes:
    - B Mode — Breaker (one-way auxiliary)
    - A Mode — Auxiliary attachments - (two-way auxiliary) crusher/nibbler
- Power outlet, 24-volt to 12-volt converter
- Proportional auto accel system
- Rearview camera and monitor
- Removable clean-out screens for side-by-side radiator, oil cooler and turbo charger intercooler

- Removable travel levers with toe tabs
- Right-side control panel includes key switch ignition (diesel engine), throttle and other operating switches
- Self-lubricated bushings in boom foot and boom hoist cylinders
- Self-lubricated steel bushing with flanged insert at arm end
- Service diagnostics:
  - Computer system displays 68 service items, 60-event fault code memory, accessible from cab
- Starting system for low temperature with motor 24V-5.36 hp (4 kW) motor, heavy-duty batteries (2x12V-160Ah) 70-amp alternator
- Straight travel system
- Suspension seat — 7-way adjustable with safety belt
- Swing and travel automatic parking brakes
- Swing flashers recessed into counterweight
- Swing priority (trenching system) functions automatically
- Swing shockless valve
- Track shoes: 31.5" (800 mm) triple bar grouser shoes
- Travel — two speed with automatic shift and travel alarm
- Two-lever control for boom, arm, bucket and swing, pilot operated
- Undercarriage master links
- Work lights — three front and two rear

## OPTIONAL EQUIPMENT

- Arm: 12' 0" (3.66 m) with rock guard
- Arm: 8' 2" (2.50 m) with rock guard
- Auto-lube system
- Belly pan guard
- Boom and arm load (lock) valves
- Combined one-way or two-way auxiliary hydraulic piping (one or two pump) with hand or foot controls.
- Control pattern changer (ISO/BHL)
- Demolition guarding package
- High & wide lower
- Heated air suspension seat
- Independent pump auxiliary rotation hydraulic system
- Large selection of buckets
- Long reach (60') with heavier counterweight
- Quick coupler
- Severe duty undercarriage (standard width)
- Track shoes: 27.6" (700 mm) double bar grouser
- Track shoes: 35.4" (900 mm) triple bar grouser
- Track shoes: 31.5" (800 mm) triple bar grouser (severe duty)
- Vandalism guards

Feel the passion we've built into the new Kobelco SK260LC excavator. If you demand productivity, performance and control, see your nearest Kobelco dealer today, or use our dealer locator at [www.kobelcoamerica.com](http://www.kobelcoamerica.com) to find the dealer nearest you.

## WORLD CLASS PRODUCTS DEMAND WORLD CLASS DEALERS

The purchase of a Kobelco excavator isn't the end, it's the beginning of our relationship together. Consider your local Kobelco dealer as your partner in productivity who will work with you to supply your business needs. Whether you need assistance in selecting the right model for your operation or developing an affordable leasing or financing plan, your Kobelco dealer can offer you sound advice because he has decades of heavy equipment experience.

Downtime can happen at any time. And that's the best time to know you've got your Kobelco dealer's full service capabilities, the 'one stop shop' is just down the street. Genuine Kobelco parts and all makes parts coverage, where and when you need them. Factory-trained service technicians, warranty experts and parts manager who are excavator experts. Fully equipped service vehicles which can bring responsive support to you quickly, to get you back up and running. Even customized professional maintenance programs, operator and technical training. You want your Kobelco equipment investment to be productive and keep your operation moving. **So do we.**

Your business deserves nothing less than world class product, supported by a world class business partner. That's your Kobelco dealer—your partner in productivity.



**KOBELCO**<sup>®</sup>  
*Your competitive edge.*

Kobelco Construction Machinery America LLC  
700 State Street  
Racine, WI 53404 USA

[www.kobelcoamerica.com](http://www.kobelcoamerica.com)

Products represented in this brochure may include optional equipment.

Note: Due to our policy of continual product improvement, all design, materials and/or specifications are subject to change without advance notice and without liability therefor. Specifications are applicable to units sold in Canada, the United States, its territories and possessions, and may vary outside these areas.

Safety begins with a thorough understanding of the equipment. Always make sure you and your operators read the Operator's Manual before using the equipment. Pay close attention to all safety and operating decals and never operate machinery without all shields, protective devices and structures in place.

